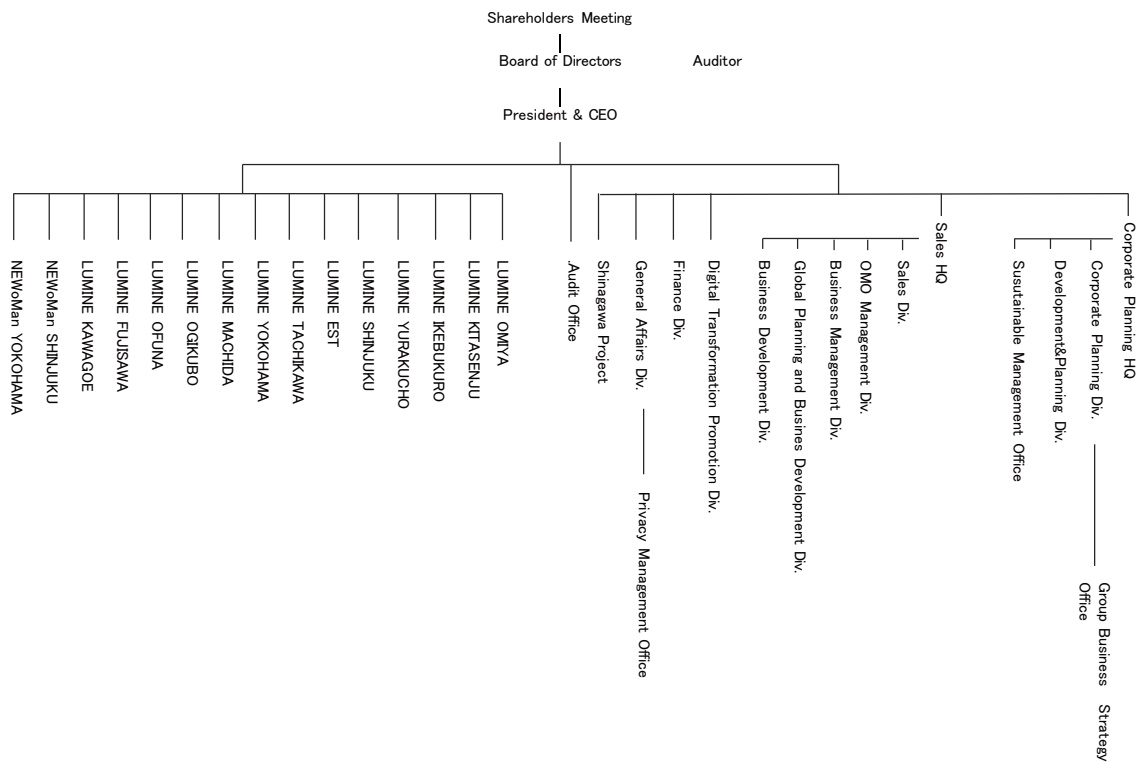


Organization Chart

April 1, 2024



Management team

April 1, 2024

Directors

Chairman : Hajime Higashikawa
 President & CEO : Teruyuki Omote

Executive Director (LUMINE Shinjuku Store Manager) : Emiko Kusanagi
 Executive Director (General Affairs Division Manager) : Osamu Ezawa
 Executive Director (LUMINE EST Store Manager) : Akihiko Iwata
 Executive Director (LUMINE Yokohama Store Manager/NEWoMan Yokohama Store Manager)
 : Takeshi Kaneko
 Executive Director (Sales Headquarters General Manager/Sales Headquarters Global Planning Division Manager)
 : Hiroshi Suwa
 Executive Director (Sales Headquarters Vice General Manager) : Yoshikazu Takahashi

Director (Corporate Planning Headquarters General Manager/
 Corporate Planning Headquarters Corporate Planning Division Manager/
 Corporate Planning Headquarters Corporate Planning Division Group
 Business Strategy Office Manager) : Atsushi Takeuchi
 Director (Corporate Planning Headquarters Vice General Manager) : Yoshiaki Kurihara
 Director (Finance Division Manager) : Kazuya Tashiro

Director (part time) : Koichi Takagi
 Director (part time) : Tomoko Konuma
 Director (part time) : Hiroyuki Ogawa
 Director (part time) : Kazuyuki Harada
 Director (part time) : Yumiko Kamada

Executive Officer (LUMINE Tachikawa Store Manager) : Masaaki Takeda
 Executive Officer (LUMINE Kitasenju Store Manager) : Junya Abe

Auditors

Standing Auditor : Yoh Uemura Auditor
 Auditor (part time) : Satoshi Shiohara Auditor
 Auditor (part time) : Hiroaki Sakai Auditor